

# U/HU Hangers

ENTER DIMENSIONS ONLY IF DIFFERENT FROM THOSE SHOWN IN CATALOG.

Job No: \_\_\_\_\_ Take Off By: \_\_\_\_\_ Date Needed: \_\_\_\_\_ Date Ordered: \_\_\_\_\_

Model Number: \_\_\_\_\_ Quantity: \_\_\_\_\_

**JOIST INFORMATION:** (In inches)

Nominal Joist Size = \_\_\_\_\_  
(Example: 2x4)

Actual Joist Size = \_\_\_\_\_  
(Example: 2x4 = 1.5" x 3.5" actual size. 6x10 rough = 6" x 10" actual size)

**OPTIONS:**

Slope (45° MAX) (Fig. 3 & 4)      Up / Down      Angle = \_\_\_\_\_  
(Circle one)      (Specify degree)

Skew (67½° MAX) (Fig. 1 & 2)      Right / Left      Angle = \_\_\_\_\_  
(Circle one)      (Specify degree)

*Hangers skewed 51-67½° requires a square cut (Fig. 9).*

Concealed Flange      Yes or No  
(Specify HUC)      (Circle one)

*HU is available with A flanges concealed, provided the W dimension is 2½" or greater.*

*HU is available with one flange concealed when the W dimension is less than 2½".*

**Maximum Skew Degree for Skewed HUC Hangers**

Hanger Width	Maximum Skew
2½"	26°
2¾"	26°
2⅞"	29°
3"	29°
3¼"	37°
3½"	38°
3⅝"	39°
3⅞"	42°

- Widths greater than 3⅞" maximum skew is 45°.
- Only acute flange concealed when skewed (Fig. 10).

Figure 1 - Skewed left

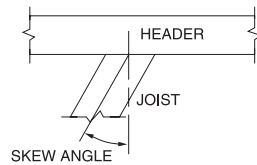


Figure 2 - Skewed right

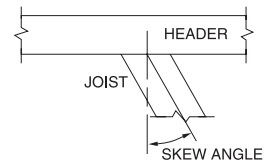


Figure 3 - Sloped up

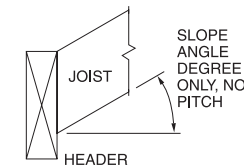


Figure 4 - Sloped down

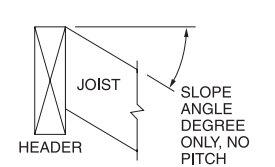


Figure 5 - Skewed left, sloped up

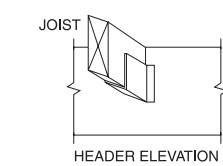


Figure 6 - Skewed right, sloped up

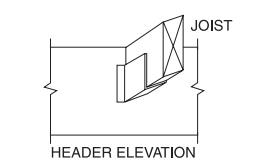


Figure 7 - Skewed left, sloped down

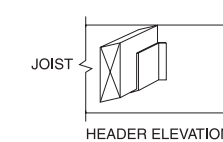


Figure 8 - Skewed right, sloped down

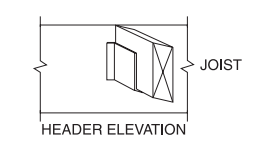


Figure 9 - Skewed right >50° (square cut)

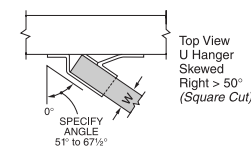
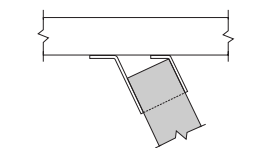


Figure 10 - HUC Skewed right, only acute angle concealed



See the current Simpson Strong-Tie *Wood Construction Connectors* catalog for General Notes and warranty information. Use all specified fasteners. **Non-catalog products must be designed by the customer and will be fabricated by Simpson Strong-Tie Co. Inc. in accordance with customer specifications. Simpson Strong-Tie Co., Inc. cannot and does not make any representations regarding the suitability of use or load carrying capacities of non-catalog products. Simpson Strong-Tie Co., Inc. provides no warranty, expressed or implied, on non-catalog products.** The performance of such modified products or altered installation procedures is the sole responsibility of the designer. All orders for hangers requiring deviations other than what is on this worksheet must be accompanied by a detailed sketch or stamped engineering drawing.

**Home Office**  
5956 W. Las Positas Blvd.  
Pleasanton, CA 94588  
FAX: 925/847-1603

**Southwest USA**  
260 N. Palm Street  
Brea, CA 92821  
FAX: 714/871-9167

**Southeast USA**  
2221 Country Lane  
McKinney, TX 75069  
FAX: 972/542-5379

**Eastern Canada**  
5 Kenview Blvd.  
Brampton, ON L6T 5G5  
FAX: 905/458-7274

**Warehouses:**  
Enfield, CT  
Jacksonville, FL  
Langley, BC

**Northwest USA**  
5151 S. Airport Way  
Stockton, CA 95206  
FAX: 209/234-3868

**Northeast USA**  
2600 International Street  
Columbus, OH 43228  
FAX: 614/876-0636

**Quik Drive Factory**  
436 Calvert Drive  
Gallatin, TN 37066  
FAX: 615/451-9806

**Western Canada**  
11476 Kingston St.  
Maple Ridge, BC V2X 0Y5  
FAX: 604/465-0297

**Specials Factories:**  
Eagan, MN  
Kent, WA

**800-999-5099**  
**www.strongtie.com**

© Copyright 2006 Simpson Strong-Tie Company, Inc.

Printed in the USA

T-U-HU-WS06 5/06